



Simplicity,
aesthetics and
performance in
your hands

G-ænial[®] A'CHORD

The advanced universal composite
with unishade simplicity



Since 1921
100 years of Quality in Dental

G-ænial A'CHORD revolution from GC

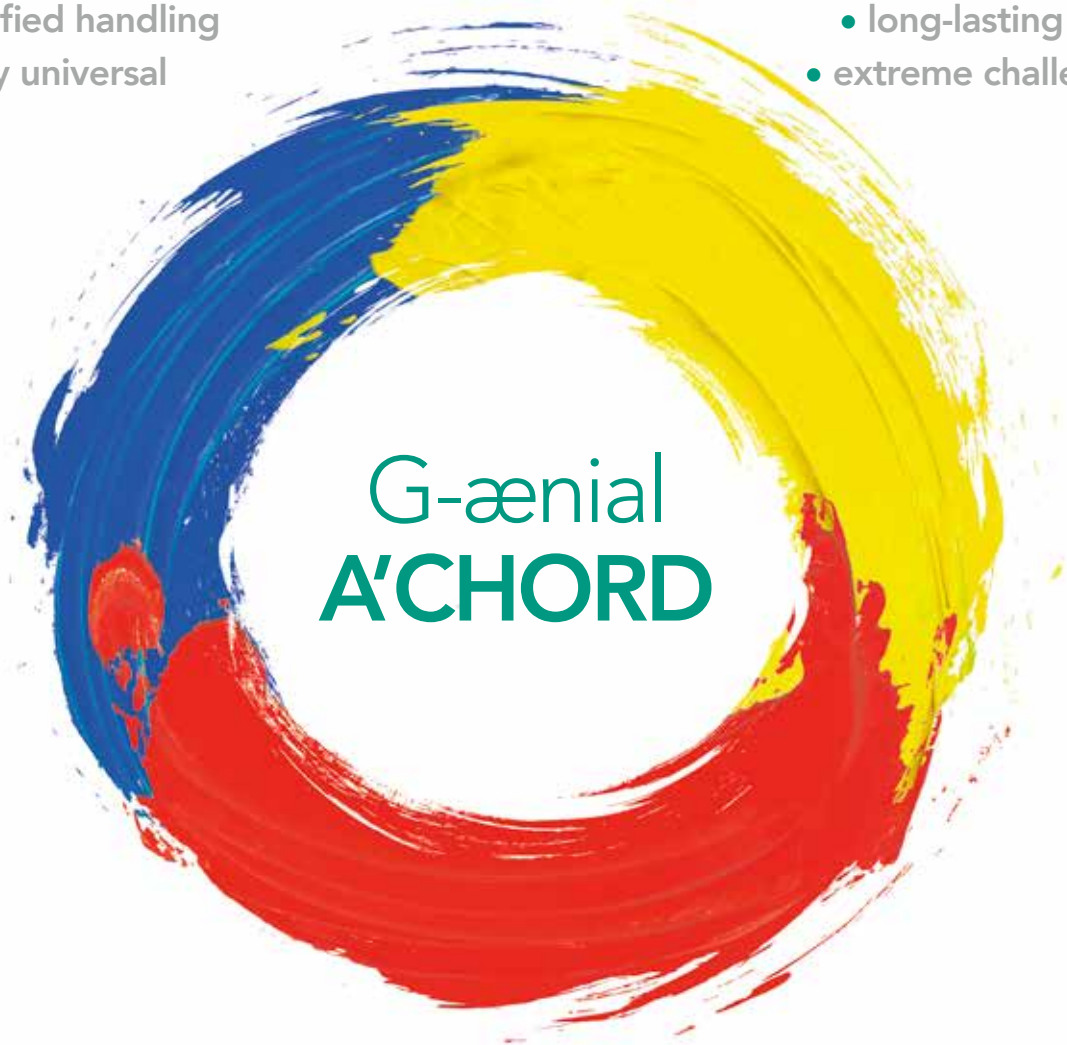
With more than 100 years of experience in serving dentistry and **over one billion composite restorations worldwide**, GC introduces its proprietary **High-performance Pulverised CERASMART (HPC)** filler and **Full-Coverage Silane Coating (FSC)** technologies with its latest universal composite G-ænial A'CHORD which brings together simplification, invisible fillings, natural fluorescence and **advanced technologies in one syringe**.

A'CHORD Simplification

- simplified unishade system
- simplified handling
- simply universal

A'CHORD Aesthetics

- natural fluorescence
- long-lasting gloss
- extreme challenges



A'CHORD Revolutionary technology

- proprietary filler and coating
- high stain and wear resistance
- excellent radiopacity

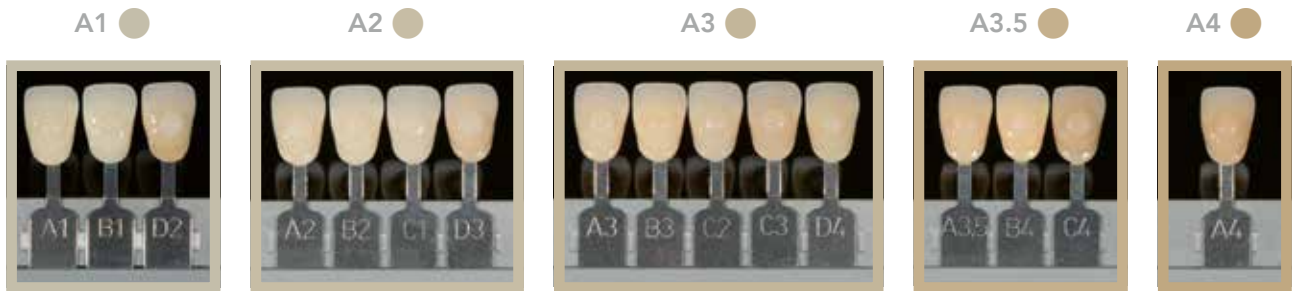
G-ænial A'CHORD is a **universal composite that delivers long-lasting invisible restorations**. Designed to save time and therefore cost, it brings together superior technology in a straightforward product. Now you can feel truly confident using a material with **effortless handling** even in challenging cases.

Impress your patients with this simplified solution.

A'CHORD Simplification

Simplified unishade

G-ænial A'CHORD always delivers more: a simplified unishade system of **5 core shades** that achieves the aesthetics of the 16 classic Vita shades **with ease**. With this reduced inventory you will save time and costs. Its unique filler technology mimics natural light reflection resulting in impressive invisible restorations.



Simplified handling

G-ænial A'CHORD provides consistently simplified handling, whether sculpting with a hand instrument or using a brush. This is enabled by the non-sticky Bis-MEPP monomer and optimized fill-monomer combination of proprietary FSC and HPC technology (GC data on file).



Simply universal

G-ænial A'CHORD offers the combination of aesthetics and strength for both anterior and posterior restorations in one straightforward package



Courtesy of Dr A. Mak, Australia



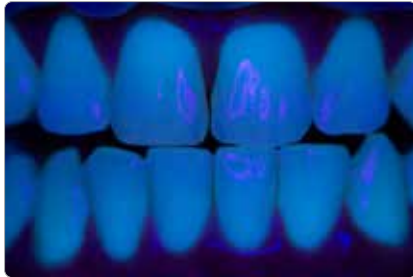
Courtesy of Dr R. Asparuhov, Bulgaria

A'CHORD Aesthetics

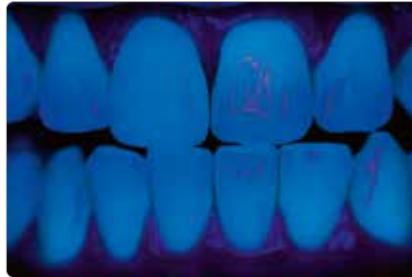
Natural fluorescence

G-ænial A'CHORD creates a **beautifully invisible and naturally fluorescent** end result under any lighting conditions, including black light, giving patients a **truly confident smile**.

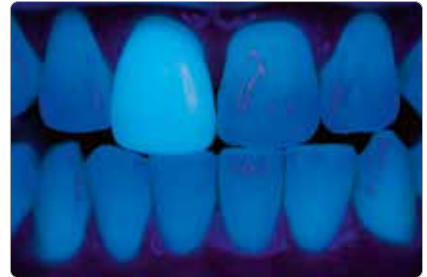
Near-UV 405 nm initial situation



G-ænial A'CHORD veneer on tooth 11



Conventional composite veneer on tooth 11



Courtesy of J. Tapia Guadix, Spain

Long lasting gloss

G-ænial A'CHORD **polishes exceptionally and retains a high gloss** thanks to its specialised proprietary technology with uniform nano filler distribution and high filler load.

Time-saving results: The remarkable high gloss achieved with minimal polishing



Invisible aesthetics even for extreme challenges

In addition to its 5 core shades G-ænial A'CHORD extends its portfolio with 2 cervical shades for elderly patients, 3 opaque for masking discoloration, 2 enamel for life-like translucency and 2 bleach shades for brighter smiles, making it possible to create invisible fillings even for extreme challenges.



Courtesy of Dr W. Boujema, France



Courtesy of Dr G. Benjamin, Germany

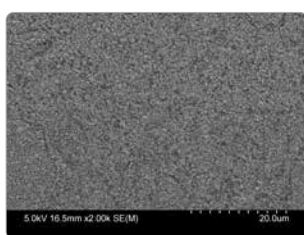
A'CHORD Revolutionary technology

Proprietary filler and coating

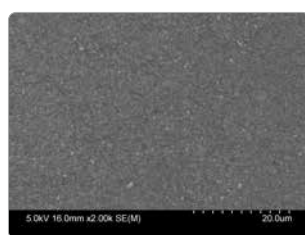
G-ænial A'CHORD represents another significant step forward in the advancement of composite materials. It is the combination of two remarkable proprietary technologies created by GC; **Full-Coverage Silane Coating (FSC)** and **High Performance Pulverized CERASMART (HPC)**. The result? The ideal synergy between advanced physical properties such as wear resistance*, gloss retention* and low discoloration¹ with simplified handling, providing the clinician excellent adaptation to the cavity preparation. Reducing placement time, it provides excellent marginal integrity and consistently yields natural looking restorations!

¹ Mizukami et al. IADR2020. Evaluation of Water Sorption and Colour Stability of Paste-Resin Composite. J Dent Res. 2020;99 Spec Issue A: #2471.
*Source: GC R&D, Japan, 2019. Data on file.

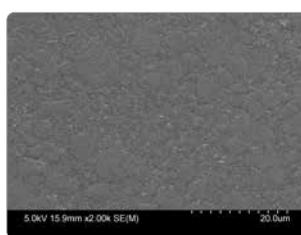
SEM Comparison of different Composite materials.



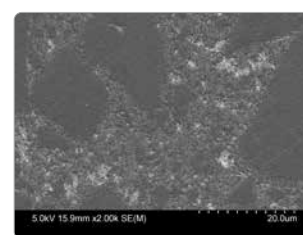
G-ænial A'CHORD



Tetric EvoCeram

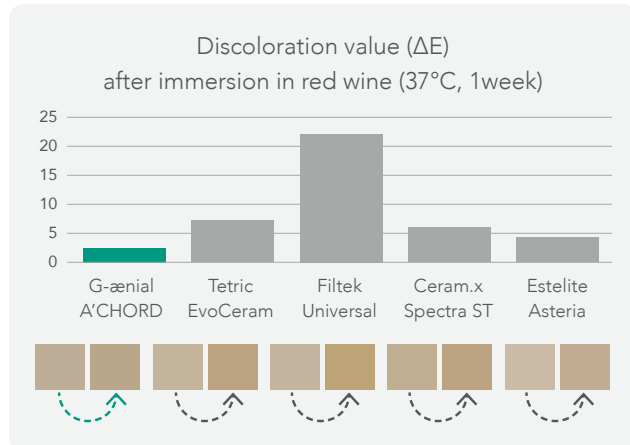


Filtek Universal



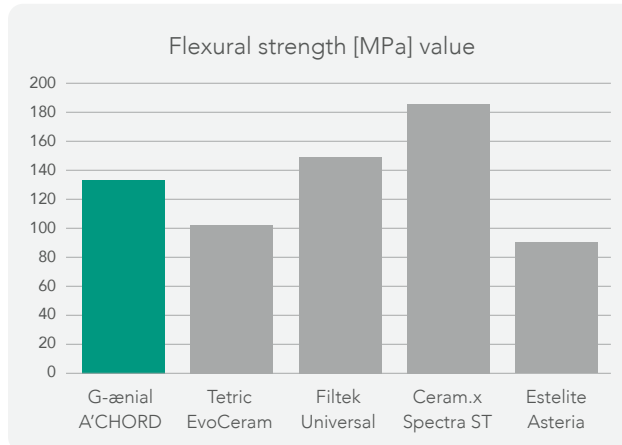
Clearfil Majesty ES-II

G-ænial A'CHORD High Stain and Wear Resistance

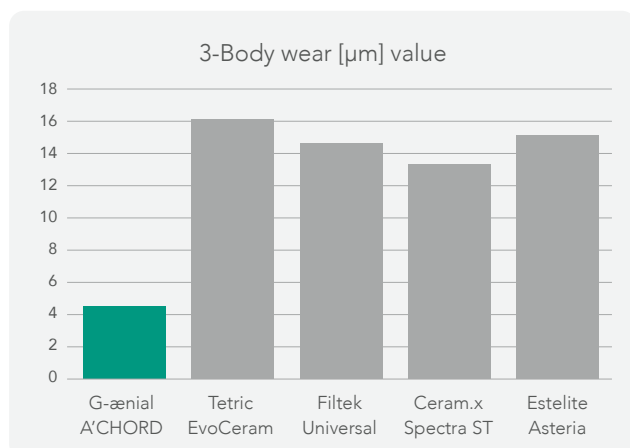


Source: GC R&D, Japan, 2020. Data on file.

G-ænial A'CHORD High Strength and Radiopacity



Source: GC R&D, Japan, 2020. Data on file.



Source: GC R&D, Japan, 2020. Data on file.

Radiopacity (318 % Al) optimizes the radiographic follow-up over time.



Courtesy of Dr W. Boujemaa, France

Syringe (1/shade)	Unitip (15/shade)	Kit	Content
10006767	10006772	G-ænia A'CHORD Layering Kit	A2; A3; AO2; AE; JE
10006768	10006773	G-ænia A'CHORD Core Kit	A1; A2; A3; A3,5; A4
10006771		G-ænia A'CHORD Bleach Kit	BW, BOW,JE

Syringe 2.1ml/4g	Unitip 15 x 0.16mL	Refill	Category
10006739	10006753	G-ænia A'CHORD A1	Standard
10006740	10006754	G-ænia A'CHORD A2	Standard
10006741	10006755	G-ænia A'CHORD A3	Standard
10006742	10006756	G-ænia A'CHORD A3.5	Standard
10006743	10006757	G-ænia A'CHORD A4	Standard
10006744	10006758	G-ænia A'CHORD A5	Standard
10006745	10006759	G-ænia A'CHORD A6	Standard
10006747	10006761	G-ænia A'CHORD AO1	Opaque
10006748	10006762	G-ænia A'CHORD AO2	Opaque
10006749	10006763	G-ænia A'CHORD AO3	Opaque
10006751	10006765	G-ænia A'CHORD JE (Junior Enamel)	Enamel
10006752	10006766	G-ænia A'CHORD AE (Adult Enamel)	Enamel
10006746	10006760	G-ænia A'CHORD BW (Bleach)	Bleach
10006750	10006764	G-ænia A'CHORD BOW (Opaque Bleach)	Bleach



Related products



G-Premio BOND
Universal
bonding agent



**G-ænia® Universal
Injectable**
High-strength
Injectable restorative



D-Light® Pro
Dual wave-
length LED
curing light

G-ænia A'CHORD is a trademark of GC. VITA, Tetric EvoCeram, Filtek Universal, Cera.x Spectra ST and Estelite Asteria are not trademarks of GC.

GC EUROPE N.V.

Head Office
Researchpark,
Haasrode-Leuven 1240
Interleuvenlaan 33, B-3001 Leuven
Tel. +32.16.74.10.00
Fax.+32.16.40.48.32
info.gce@gc.dental
<http://europe.gc.dental>

GC UNITED KINGDOM Ltd.

Coopers Court Newport Pagnell
Buckinghamshire
MK16 8JS
United Kingdom
Tel. +44.1908.218.999
Fax.+44.1908.218.900
info.uk@gc.dental
<http://europe.gc.dental/en-GB>

'GC.'